



# THE MATTHEWS GROUP

*Lifestyles*  
FOR *Sale*

Stacey Matthews • [matthewss@raveisre.com](mailto:matthewss@raveisre.com)  
[staceymatthews.com](http://staceymatthews.com) • [raveis.com](http://raveis.com) • 860-868-9066

**Town:** Litchfield, CT

**Price:** \$8,650,000 w/210 Acres or \$6,950,000 w/50 Acres or **Rental** \$15,000 a month annual starting Sept. 1, 2010

**Style:** Avalon Farms' Estate

**Bedrooms:** 9

**Bathrooms:** 6 full; 3 half

**Square Feet:** 10,127 ±

**Acreage:** 210 ± Acres

**Call or Email:** Stacey Matthews: 860-868-9066; [matthewss@raveisre.com](mailto:matthewss@raveisre.com) to request more information.

**Description:** Stunning stone and stucco English Country manor house overlooking the majestic Litchfield Hills. Drive through the iron gates and view the house from the long approach through the allee of mature trees. The stone walls meet you half way and carry you under the porte cochere and onto the cobblestone-lined courtyard.

Designed by premier architect, Wilson Eyre, the home was completed in 1908 for heiress, Isabella Douglas Curtis. Live and entertain in style in this lovingly updated home. Spacious living room for entertaining, cozy library for relaxing, and multiple terraces for enjoying the views. The kitchen renovation has just been completed and features double sub zero refrigerators, large island, butler's pantry, and breakfast room. 5 main bedrooms (each with en-suite bath) which includes the spacious master bedroom with its own adjoining dressing room. Most rooms in the house have an exceptional and unique fireplace, a total of 9 in all. The servant's quarters hosts 4 additional bedrooms and a bath.

210 acres with tennis court, custom built play structure, four car garage, stone pergola, new 70 foot pool with Jacuzzi, horse paddocks.

Situated near the Washington border of Litchfield, the owner can reach either town center in just 10 minutes. One hour 30 minutes to NYC, 45 minutes to Hartford and 2.5 hours from Boston make this destination easily accessible for world travelers.

This home is a member of The National Register of Historic Homes.

## **About the Architect**

The respected national reputation of the architect, Wilson Eyre, adds to the property's significance. Eyre was well-known as the designer of many large private homes and estates in the countryside around Philadelphia and New York City, and in Maryland, Michigan, Maine and Rhode Island. Eyre studied at the Massachusetts Institute of Technology and practiced alone for

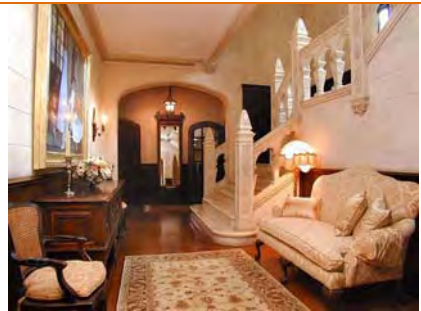
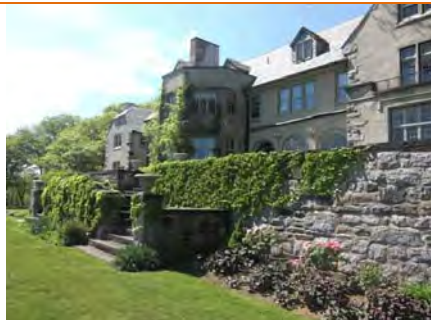


# THE MATTHEWS GROUP

*Lifestyles*  
FOR *Sale*

Stacey Matthews • [matthewss@raveisre.com](mailto:matthewss@raveisre.com)  
[staceymatthews.com](http://staceymatthews.com) • [raveis.com](http://raveis.com) • 860-868-9066

many years in Philadelphia. In 1914, he formed a partnership with J. Gilbert McIlvaine, and their firm won many important residential commissions. Eyre also individually designed many buildings, including the City Safe and Deposit Building in Philadelphia, the City Club in Detroit, and several buildings at Newcomb College in New Orleans.





# THE MATTHEWS GROUP

*Lifestyles*  
FOR *Sale*

Stacey Matthews • [matthewss@raveisre.com](mailto:matthewss@raveisre.com)  
[staceymatthews.com](http://staceymatthews.com) • [raveis.com](http://raveis.com) • 860-868-9066





# THE MATTHEWS GROUP

*Lifestyles*  
FOR *Sale*

Stacey Matthews • [matthewss@raveisre.com](mailto:matthewss@raveisre.com)  
[staceymatthews.com](http://staceymatthews.com) • [raveis.com](http://raveis.com) • 860-868-9066





# THE MATTHEWS GROUP

*Lifestyles*  
FOR *Sale*

Stacey Matthews • [matthewss@raveisre.com](mailto:matthewss@raveisre.com)  
[staceymatthews.com](http://staceymatthews.com) • [raveis.com](http://raveis.com) • 860-868-9066





# THE MATTHEWS GROUP

*Lifestyles*  
FOR *Sale*

Stacey Matthews • [matthewss@raveisre.com](mailto:matthewss@raveisre.com)  
[staceymatthews.com](http://staceymatthews.com) • [raveis.com](http://raveis.com) • 860-868-9066

